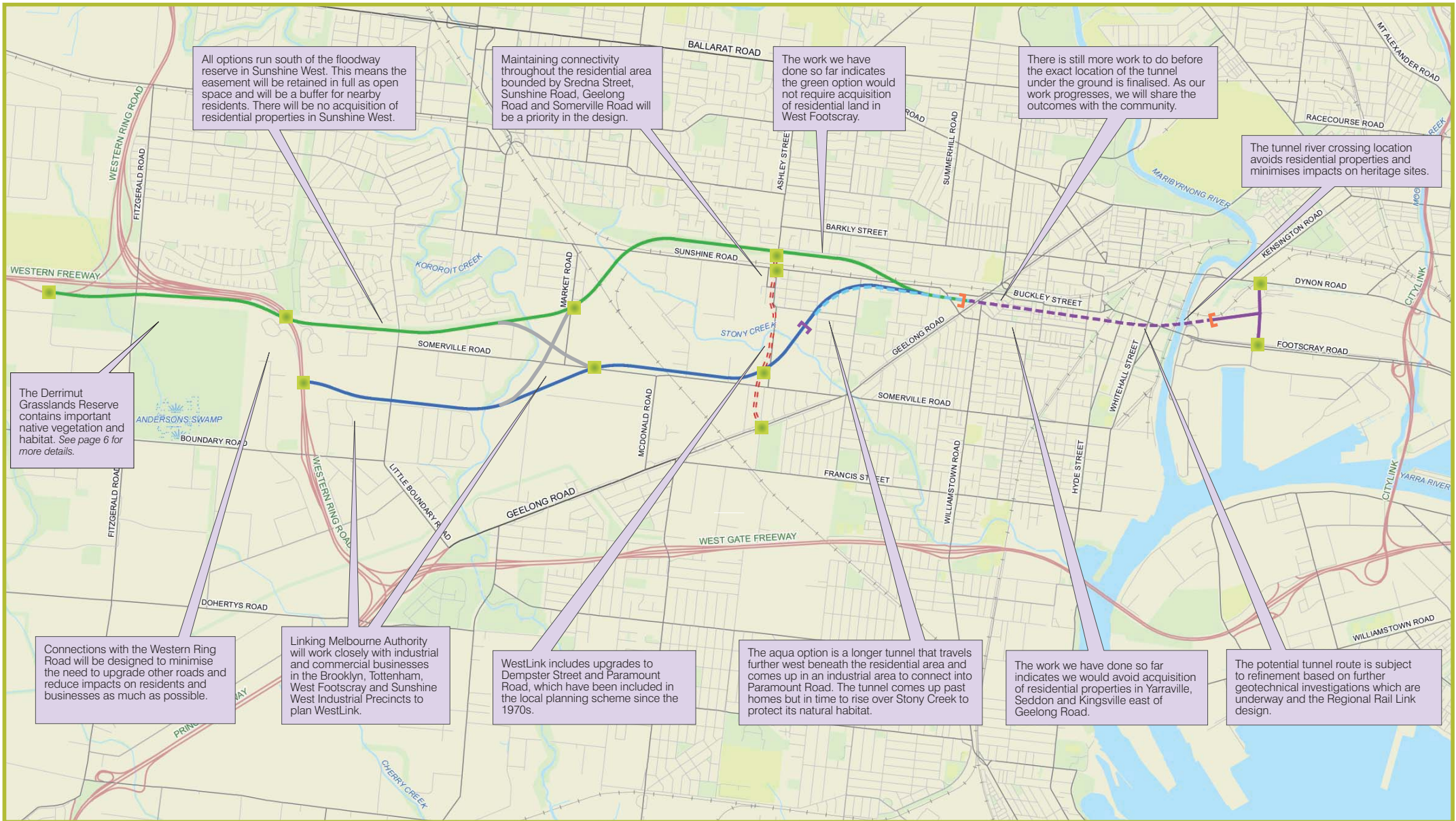


WestLink route options



All options run south of the floodway reserve in Sunshine West. This means the easement will be retained in full as open space and will be a buffer for nearby residents. There will be no acquisition of residential properties in Sunshine West.

Maintaining connectivity throughout the residential area bounded by Sredna Street, Sunshine Road, Geelong Road and Somerville Road will be a priority in the design.

The work we have done so far indicates the green option would not require acquisition of residential land in West Footscray.

There is still more work to do before the exact location of the tunnel under the ground is finalised. As our work progresses, we will share the outcomes with the community.

The tunnel river crossing location avoids residential properties and minimises impacts on heritage sites.

The Derrimut Grasslands Reserve contains important native vegetation and habitat. See page 6 for more details.

Connections with the Western Ring Road will be designed to minimise the need to upgrade other roads and reduce impacts on residents and businesses as much as possible.

Linking Melbourne Authority will work closely with industrial and commercial businesses in the Brooklyn, Tottenham, West Footscray and Sunshine West Industrial Precincts to plan WestLink.

WestLink includes upgrades to Dempster Street and Paramount Road, which have been included in the local planning scheme since the 1970s.

The aqua option is a longer tunnel that travels further west beneath the residential area and comes up in an industrial area to connect into Paramount Road. The tunnel comes up past homes but in time to rise over Story Creek to protect its natural habitat.

The work we have done so far indicates we would avoid acquisition of residential properties in Yarrville, Seddon and Kingsville east of Geelong Road.

The potential tunnel route is subject to refinement based on further geotechnical investigations which are underway and the Regional Rail Link design.

Not to scale
N
↑

Legend

- connection to existing roads
- tunnel portal - green and blue option
- tunnel portal - aqua option
- blue option
- aqua option longer tunnel
- green option
- variation
- Paramount Road upgrade
- tunnel common to all routes